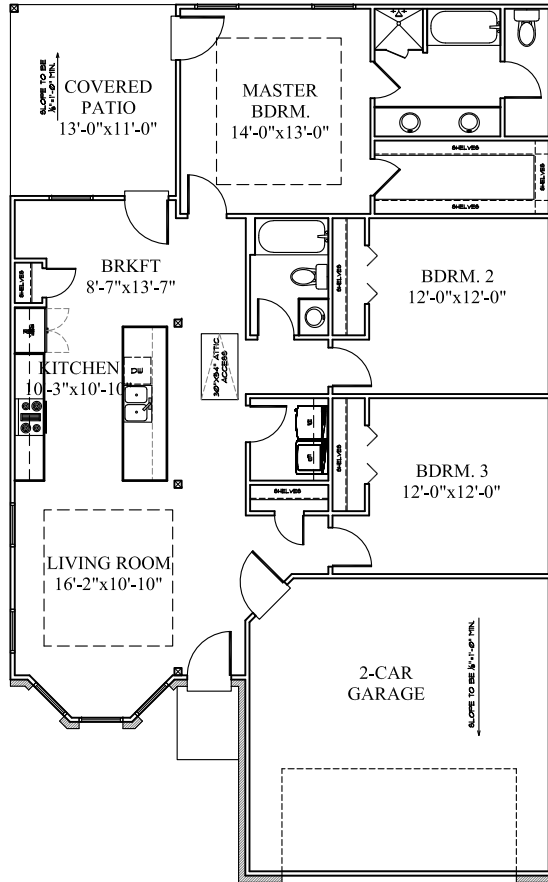


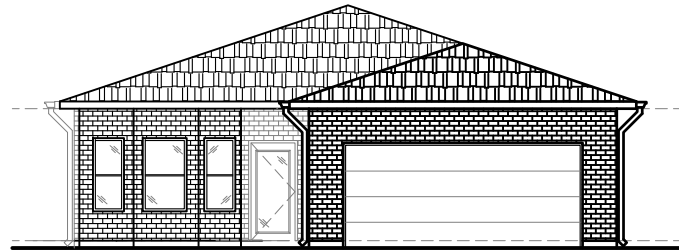


THE ELMETER

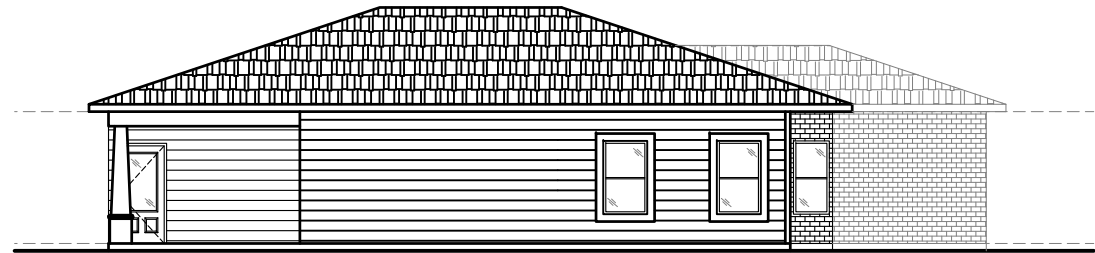
LIVING SQFT:	1,449 SQFT.
PATIO/PORCH	168 SQFT.
GARAGE/STORAGE:	435 SQFT.
TOTAL SQFT.:	2,052 S.F.



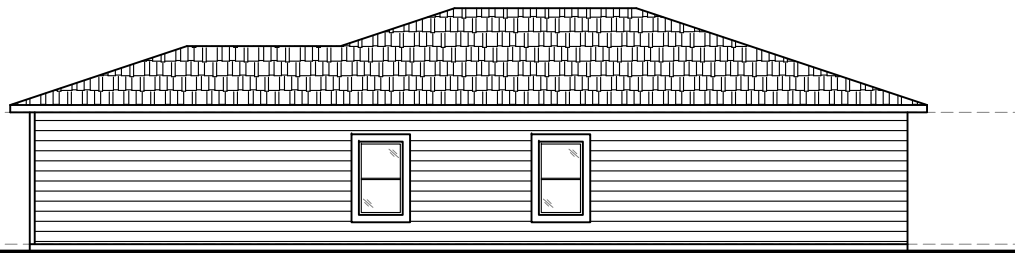
FLOOR PLAN



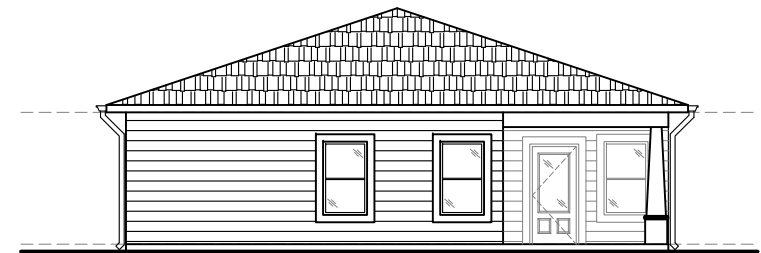
FRONT



LEFT



RIGHT



REAR

ANY FLOOR PLAN AND/OR ELEVATION RENDERING IS AN ARTIST'S CONCEPTUAL RENDERING INTENDED TO PROVIDE A GENERAL OVERVIEW, BUT ANY SUCH RENDERING DOES NOT CONSTITUTE ACTUAL PLANS AND SPECIFICATIONS FOR ANY HOME. RENDERINGS AND PICTURES ARE REPRESENTATIVE AND MAY DEPICT FLOOR PLANS, ELEVATIONS, OPTIONS, UPGRADES, LANDSCAPING AND OTHER FEATURES AND AMENITIES THAT ARE NOT INCLUDED AS PART OF ALL HOMES AND/OR MAY NOT BE AVAILABLE FOR ALL LOTS AND/OR IN ALL COMMUNITIES. RENDERINGS MAY NOT BE DRAWN TO SCALE. ANY PROVIDED DIMENSIONS ARE APPROXIMATE AND ACTUAL DIMENSIONS MAY VARY. HOMES MAY BE CONSTRUCTED WITH A FLOOR PLAN THAT IS THE REVERSE OF THE FLOOR PLAN RENDERING. PLANS ARE COPYRIGHTED AND/OR OTHERWISE SUBJECT TO INTELLECTUAL PROPERTY RIGHTS OF J.B. THIBODEAUX HOMES & PROPERTIES AND/OR OTHERS AND CANNOT BE REPRODUCED OR COPIED WITHOUT J.B. THIBODEAUX HOMES & PROPERTIES PRIOR WRITTEN CONSENT. PLANS AND SPECIFICATIONS, HOME FEATURES, AND COMMUNITY INFORMATION ARE SUBJECT TO CHANGE AND HOMES TO PRIOR SALE, AT ANY TIME WITHOUT NOTICE OR OBLIGATION. ADDITIONALLY DEVIATIONS AND VARIATIONS MAY EXIST IN ANY CONSTRUCTED HOME INCLUDING, WITHOUT LIMITATION: (i) SUBSTITUTION OF MATERIALS AND EQUIPMENT OF SUBSTANTIALLY EQUAL OR BETTER QUALITY (ii) MINOR STYLE, LOT ORIENTATION AND COLOR CHANGES; (iii) MINOR VARIANCES IN SQUARE FOOTAGE AND IN ROOM AND SPACE DIMENSIONS AND IN WINDOW, DOOR, UTILITY OUTLET AND OTHER IMPROVEMENT LOCATIONS; (iv) CHANGES AS MAY BE REQUIRED BY ANY STATE, FEDERAL, COUNTY, OR LOCAL GOVERNMENTAL AUTHORITY IN ORDER TO ACCOMMODATE REQUESTED SELECTIONS AND/OR OPTIONS; AND (v) VALUE ENGINEERING AND FIELD CHANGES.